



JPS ACADEMY NISSING

(An English Medium Co-Education School)
Affiliated to CBSE, New Delhi (Code : 531543)

Prospectus SESSION 2022-2023

IN PURSUIT OF EXCELLENCE



NURTURING A PASSION FOR LEARNING

JPS Academy

A Unique School with a Difference Based on
Modern Tech & Basic Culture



A TRIBUTE TO THE **DEPARTED SOUL**

Late Sh. Jai Pal Singh Ji the one who served humanity & mankind and a strong pillar who supported the poor. He was a pure soul in this world.

JPS Academy is inspired by the ideal and objectives of Late Sh. Jai Pal Singh Ji who represented the common citizen throughout his life to strive for something beyond perfection. He was a true visionary, ambitious and an adorable personality who had a long cherished desire to start an educational institution which could impart the quality and value based education to the future generation of Assandh, Nissing and adjoining villages.



Late Sh. JAI PAL SINGH JI



ACHIEVING WITH
CONFIDENCE

JPS Family

WELCOMES YOU



YOGENDER RANA (Chairman)

I take pride in stating that JPS Academy has been successful in proving true the words of Willa. A foster quality is never an accident, it is always the result of high invention, sincere efforts, intelligent direction and skillful execution. It represents the wise choice of many alternatives.

This institution has carefully trudged up the road of achievements, consistently striving for betterment and has carved a niche for itself in the education fraternity, I wish well for the future and hope to see this institute and its members reach the pinnacle of their success.



BALRAJ SINGH (Principal)

Education is to be enjoyed and imbibed for life and is the best route to improve the world in which we live.

JPS Academy provides its students safe, nurturing environment where faculty and staff go the extra mile to meet their needs. Apart from inspiring students to achieve best possible academic results, we encourage them to acquire habits of curiosity, mental flexibility, self-discipline and maintain openness of mind, dignity of conduct and mutual respect in the background of social, cultural and linguistic diversity.



Mission and Vision

We, at JPS Academy focus our dedication towards evoking a passion for learning and developing the requisite set of attitudes, skills and knowledge that enable our learners to maximize their potential towards becoming positive, responsible and well informed participants in our democratic and rapidly progressing global community

Our mission statement therefore holds true when we say "Marching towards Excellence" which enunciate the ability of the school to inculcate the basic values and to provide the atmosphere to acquire a passion for excellence for the students.



Infrastructure

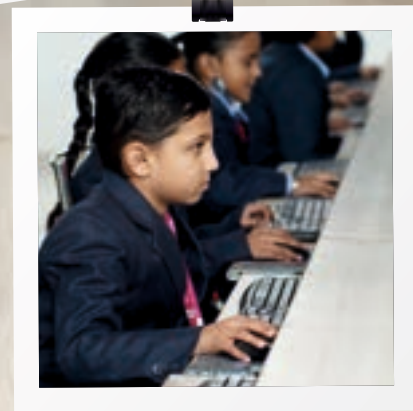
Surrounded by the serene and peaceful environment, it is one of its kind to provide a natural and pollution free environment, far away from the activities of city. The infrastructure and environment are ideal for learning and building an intellectual perception through holistic education

The School has self developed, Wi-Fi campus extended over 06 acres of land having earth quake resistant finest infrastructure of its own kind supported by 24 hrs CCTV facility.

It has fully equipped laboratories, all facilities for sports activities, smart classrooms, IT enabled education and space for all round development.

www.jpsacademynissing.com

06-07



Computer Lab

For imparting knowledge according to the recent tech. era and making the day to day work easier and cost effective.



Integrated Laboratories

To verify the ideas generated theoretically.

To generate the results and reactions in front of own eyes to give an impression that these chemical changes are not fake.



RESPECT

Our core values are based on respect for each other and our environment, both in school and in further fields.



Curriculum

JPS Academy Nissing was established in the year 2017 with a dream of turning it into an institution for excellence which would be a name to be reckoned with in the field of education.

Spread over a sprawling campus, JPS Academy, Nissing provides students an ambience to learn, to grow and mature into leaders capable of shouldering the responsibilities of future.

JPS Academy is affiliated to CBSE widely recognized and highly regarded school board in the country.

We place great importance on educating child his/her individual level of ability and potential to ensure a happy learner.



Art & Craft

Art and craft is a concept of sheer creativity letting the child to produce meaning and beauty to the surroundings.





Dream, Achieve & Inspire

JPS Academy boosts the benefits of our newly built Infant and early years provision with its impressive use of space and inspiring facilities and yet retains an intimate and friendly feel.

Whilst enjoying the benefit of being able to access the outstanding facilities of the main school, there are specific outside play areas for the infants and well equipped and stimulating outdoor learning spaces for the early years children.



Prepared For Their Future



The school is actively engaged in holistic development of the students by providing plethora of opportunities to students to showcase their talent through multiple events like declamations, debates, dramas, music & dance.





EXPLORE

Opportunities outside the classroom help to strengthen friendships and provide access to a whole range of new experiences and interests





Sports Facilities

Students have option of indulging in the sport of their choice for an overall development. There is provision of running track, table tennis, the football ground, basketball & badminton court, one skating ground are few among many other sports structures where students can hone their physical and sports skills.





Music & Dance

The rhythmic moves and actions are learnt to have flexibility and portraying the characters.



Transportation

Transport is for those students who are interested in availing transport facility for community to & fro the institute. The institute provides organizational support by arranging buses for the purpose on 'No Profit' 'No Loss' basis.

Admission Procedure

A child seeking admission to the school must first get his/her name registered. Registration is no surety for admission until & unless he/she appears in the entrance examination in the month of February & April. The admission is subject to availability of seats.

Every student seeking admission to academy has to appear in the entrance test. Every candidate, who is registered, will be given the date and time for the entrance test. However, mere registration is no guarantee for admission. Students are admitted on the basis of merits and tests.

Requirements

- Birth Certificate
- Transfer Certificate (Previous School)
- Medical Fitness & Admission Form
- Identity Card form & Transportation Form
- Two colored passport size photographs of child





JPS ACADEMY NISSING

(An English Medium Co-Educational School) | Affiliated to CBSE, New Delhi (Code : 531543)
OPPOSITE RADHA SOAMI SATSANG BHAWAN, KAITHAL ROAD, NISSING (KARNAL)

Contact : +91-8572834906, 8572835906 | E : jpsacademynissing@gmail.com

